

Butterfly & Other Invertebrates Club Inc. (BOIC), Butterfly Survey, Boondall Wetlands, Brisbane Saturday 11 September 2021

Dawn Franzmann

The first of our butterfly and other invertebrates' surveys was held on the 11 September at the Boondall Wetlands. Twenty (20) BOIC club members were present. The weather was perfect for walking for taking in the beauty of the area. We were welcomed by Natalie Costanzo and Brodie McMahon from the Environment Centre's staff. It was lovely to meet a couple of our new members and to welcome again some long-time members of BOIC.

The Brisbane City Council has granted BOIC a permit to conduct surveys in their environment parks for the next twelve months. Trevor Lambkin and Russel Denton were our leaders and we proceeded along the Nurri Millem Totem Trail with lots of hope and anticipation that we were going to see butterflies in flight. This Totem Trail is in recognition of the original indigenous inhabitants of this area.

Not to be disappointed, we soon swooped with our nets, collected in our bottles and were able to identify a Dingy Ringlet, *Hypocysta pseudirius*. (Fig. 1). A few days prior, I had visited the same spot and I was pleased to have identified a Brown Ringlet, *H. metirius*. I had mentioned this to Trevor and I was excited to guide him to the spot when he quickly corrected my identification; I had seen a Dingy Ringlet, this was a welcomed surprise.

It was hard to keep the group together as everyone was keen to keep going in the search for a beautiful specimen they may not have seen before. A few members were keen to walk through parts of the mangrove section in search of the illusive Illidge's Ant Blue, *Acrodipsas illidgei*. This particular endangered butterfly is endemic to Australia and is found in mangrove areas.

Along the way we noticed other butterflies: Glasswings, *Acraea andromacha*, (Fig. 2), Blue Tigers, *Tirumala hamata*, Clearwing Swallowtails, *Cressida cressida*, Varied Eggflys, *Hypolimnas bolina*, Large Grass Yellows, *Eurema hecabe* (Fig. 5), Grass Dart, *Ocybadistes walkeri*, (Fig. 6). The most significant and exciting finds were to be at the end of our walk, when we netted a Satin Azure, *Ogyris amaryllis* (Fig. 3) and a Samphire Blue, *Theclinessthes sulpitius*, (Fig. 4).

It was certainly challenging to capture images of butterflies in the identification bottles; however, our members were up to the challenge. Thank you to all members who submitted photographs.

Please read in the following list all of the butterflies we accurately identified.

With summer, fast approaching we are looking forward to officially revisiting Boondall Wetlands for a further two surveys. The data that we record in our summer surveys will be included in the official records of Brisbane's Big Butterfly Count.

BUTTERFLY & OTHER INVERTEBRATES CLUB Inc. 2021/2022 SUMMER BUTTERFLY SURVEY NO. 1 BOONDALL WETLANDS – 11 SEPTEMBER 2021 (DATA TO BE INCLUDED IN THE BRISBANE'S BIG BUTTERFLY COUNT)		
Common Name/Butterfly	Scientific Name/Butterfly	Nurri Millen Totem Trail & Part of the Mangrove Section
Lemon Migrant	<i>Catopsilia pomona</i>	Collected, identified and released between the hours of 10.30 am and 1.00 pm.
Dingy Ringlet	<i>Hypocysta pseudirius</i>	
Glasswing	<i>Acraea andromacha</i>	
Small Dusky Blue	<i>Erina erina</i>	
Common Crow	<i>Euploea corinna</i>	
Black Jezebel	<i>Delias nigrina</i>	
Common/varied Eggfly	<i>Hypolimnys bolina</i>	
Clearwing Swallowtail	<i>Cressida cressida</i>	
Wanderer/Monarch	<i>Danaus plexippus</i>	
Large Grass Yellow	<i>Eurema hecabe</i>	
Swamp Tiger	<i>Danaus affinis</i>	
Evening Brown	<i>Melanitis leda</i>	
Satin Azure	<i>Ogyris amaryllis</i>	
Samphire Blue	<i>Theclines thes sulpitius</i>	
Saltbush Blue	<i>Theclines thes serpentatus</i>	
Green Grass Dart	<i>Ocybadistes walkeri</i>	
Large Dark Grass Dart	<i>Suniana sunias</i>	
Blue Tiger	<i>Tirumala hamata</i>	

Trevor Lambkin and Dawn Franzmann,
Recorders

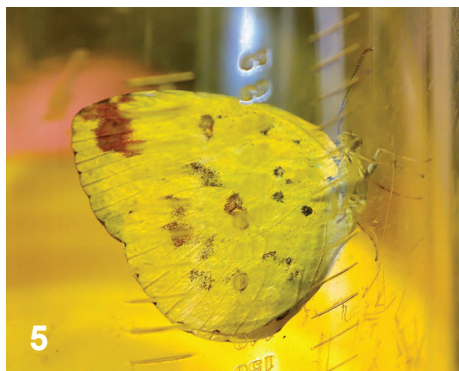
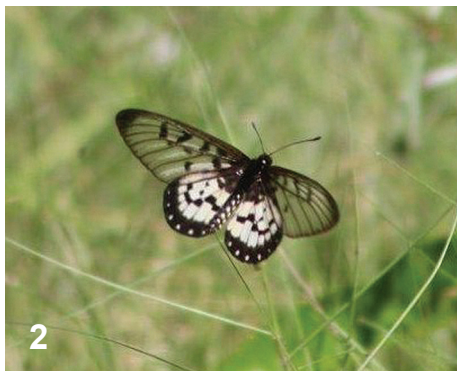


Fig. 1. Dinky Ringlet, *Hypocysta pseudirius*, © Jack Wade

Fig. 2. Glasswing, *Acraea andromacha*, © Jack Wade

Fig. 3. Satin Azure, *Ogyris amaryllis*, © Ian Ferrier

Fig. 4. Samphire Blue, *Theclinessthes sulphitius*, © Deanne Gaskill

Fig. 5. Grass Yellow, *Eurema hecabe*, © Rip Curtis

Fig. 6. Grass Dart, *Ocybadistes walkeri*, © Deanne Gaskill